

A decorative graphic consisting of two vertical columns of white circles on an orange background. The circles are arranged in a grid pattern, with the left column having six circles and the right column having five circles. The circles are of uniform size and are spaced evenly.

YOUR EVENT AT  
**BLUEPRINT**



## THE SPACE

The space offers guests some of the best uninterrupted views in the capital, showcasing the Thames, Tower Bridge and much more. It is the perfect venue for corporate and private events as well as being an iconic spot to host your wedding celebrations. During the warmer months, the venue's glass doors open to create a sense of alfresco dining, while during the winter the floor-to-ceiling windows offer unrivalled views over the Thames. Blueprint has a contemporary feel offering a flexible open space. It comes with the added bonus of an outside terrace boasting alfresco view across the City. Located only 15 minutes from London Bridge the venue is well connected with local transport, your guests could even arrive by boat.

# CAPACITIES

## STANDING

- Reception 160
- Receptions with food stations 140

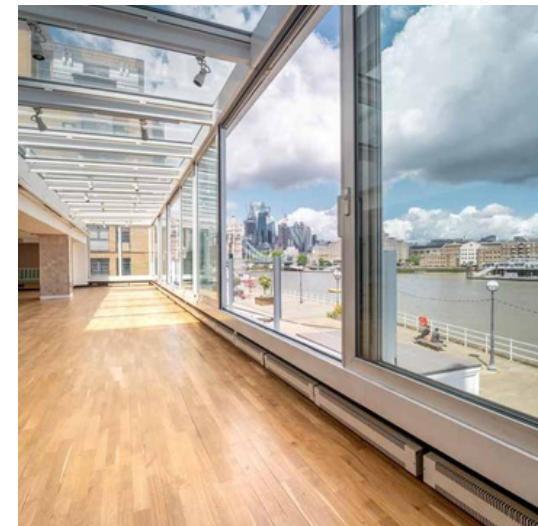
## SIT DOWN

- Single Dining Table 50
- Multiple Tables 100



## WHATS INCLUDED IN YOUR HIRE

- Event manager
- Cleaning of the venue
- Cloakroom equipment
- Full onsite kitchen
- Security



# LOGISTICS

## LICENSING

	MON - SAT	SUN
Last orders for drinks	11.30pm	10.30pm
Guests clear of venue	12.30pm	11.30pm

## RULES & REGULATIONS

	MON - SAT	SUN
Amplified music limit 85dB	11.00pm	10.00pm
No drums		
Background music	11.30pm	10.30pm

*NB for events with amplified music, the terrace is closed*

## LOCAL TRANSPORT LINKS

### UNDERGROUND

London Bridge (Jubilee & Northern lines)

Tower Hill (District line)

### BY BOAT

London Bridge City Pier, served by Thames Clippers throughout the day

# GET IN TOUCH

02073787031

[blueprint@danddlondon.com](mailto:blueprint@danddlondon.com)

Blueprint Event Space,  
28 Shad Thames,  
London EC1N 8TS

## WHERE TO FIND US:

